


The Produce Sheds of Robstown, Texas

April 4, 2017



PHOTO BY M. GREGOR, CORPUS CHRISTI, TEXAS




 TEXAS

GEORGE H. PAUL BUILDING SITE

ROBSTOWN BEGAN IN 1903 AT THE MERGER POINT OF THE TEXAS-MEXICAN AND THE ST. LOUIS, BROWNSVILLE & MEXICO RAILROADS. THE TOWN GREW RAPIDLY AFTER THE ARRIVAL OF LAND DEVELOPER GEORGE H. PAUL. HE ORGANIZED THE GEORGE H. PAUL LAND CO., ACQUIRED ABOUT 300,000 ACRES OF LAND FROM NEARBY RANCHES, AND SUBDIVIDED THE PROPERTY INTO COTTON FARMS. SPECIAL TRAINS TRANSPORTED PAUL'S LAND AGENTS TO THE EAST AND MIDWEST TO INTEREST PROSPECTIVE BUYERS IN THE AREA.

THE HUB OF ACTIVITIES IN THE NEW COMMUNITY WAS THE PAUL BUILDING, A TWO-STORY RED BRICK STRUCTURE ERECTED AT THIS LOCATION IN 1908. ITS FIRST FLOOR WAS OCCUPIED BY THE HOWARD AND JACOBY GENERAL STORE. THE MULTI-PURPOSE BUILDING ALSO HOUSED ROBSTOWN'S FIRST SCHOOL AND A COMMUNITY ROOM WHERE CHURCH SERVICES WERE HELD. A WINDMILL AND WELL BEHIND THE STRUCTURE PROVIDED THE TOWN'S WATER SUPPLY.

THE GUARANTY STATE BANK, ORGANIZED IN 1913 BY WILLIAM H. ("BILL") DAINWOOD, OCCUPIED THE PAUL BUILDING IN 1924. RENAMED THE STATE NATIONAL BANK OF ROBSTOWN IN 1926, IT WAS NOTED FOR ITS STABILITY IN THE GREAT DEPRESSION OF THE 1930s. THE PAUL BUILDING WAS DEMOLISHED IN 1972. AFTER THE STRUCTURE BECAME UNSAFE, AND A NEW BANK FACILITY WAS ERECTED AT THE SITE.

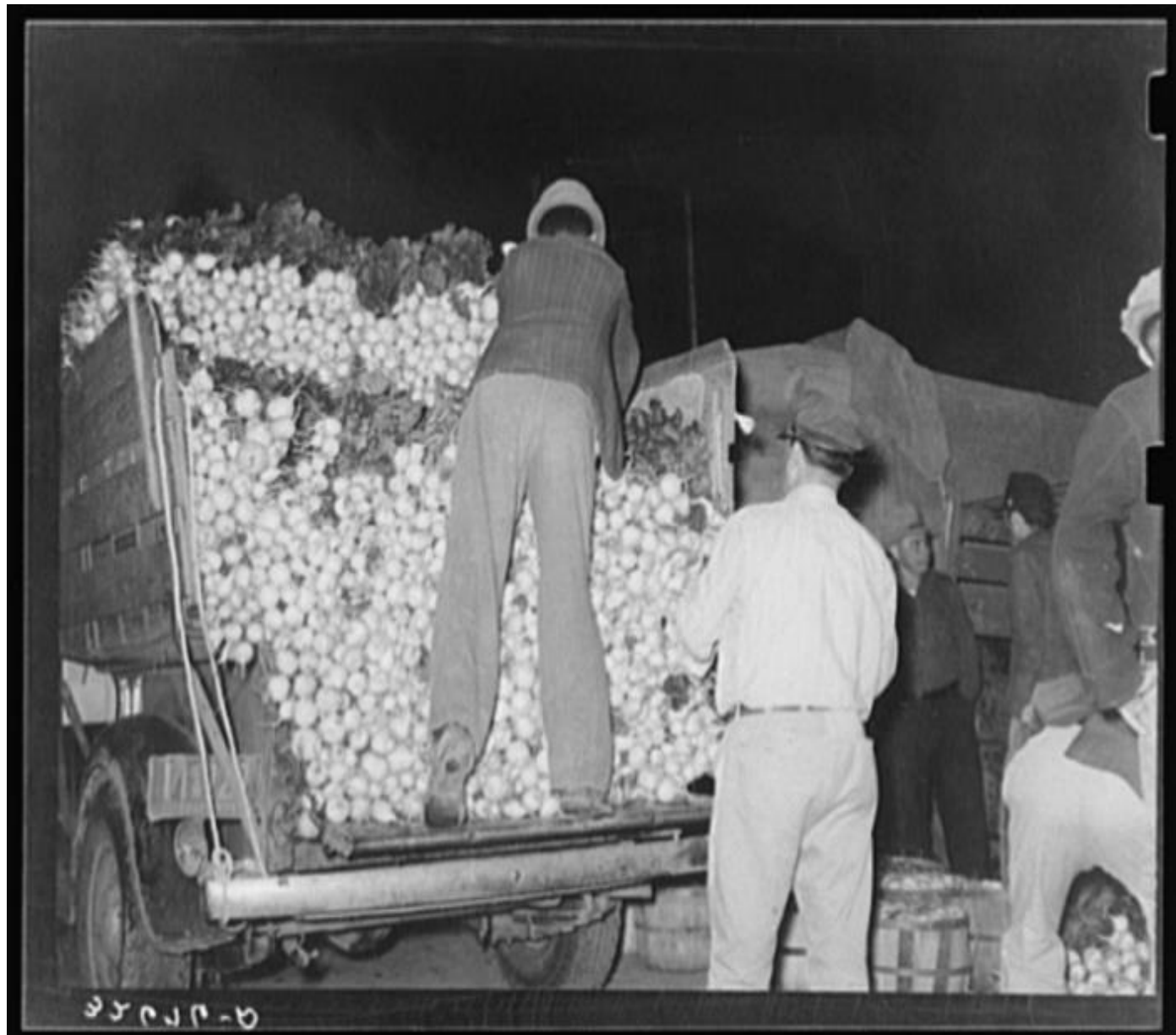
1998















WELCOME TO



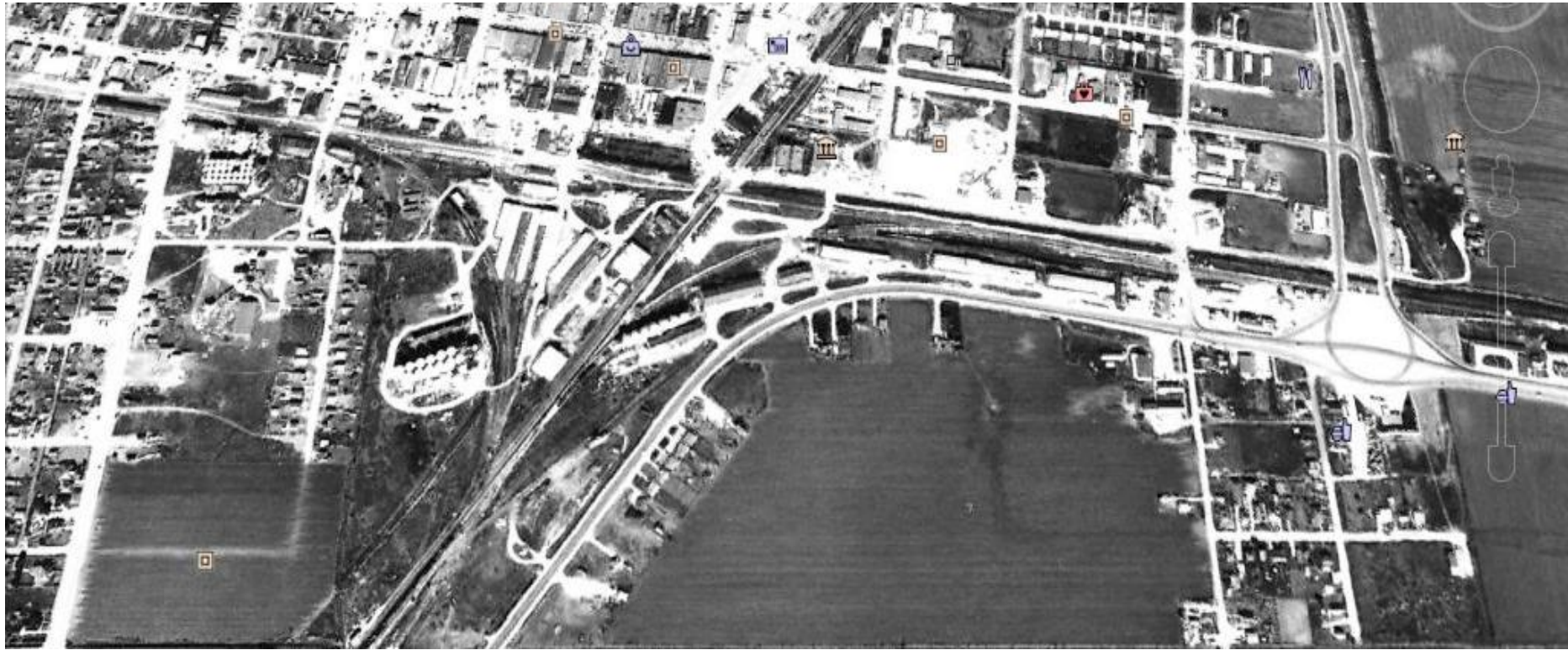
**KING RANCH
MUSEUM**

HENRIETTA
MEMORIAL CENTER

KING RANCH MUSEUM

OPEN

MON SAT 10-4
SUN 1-5



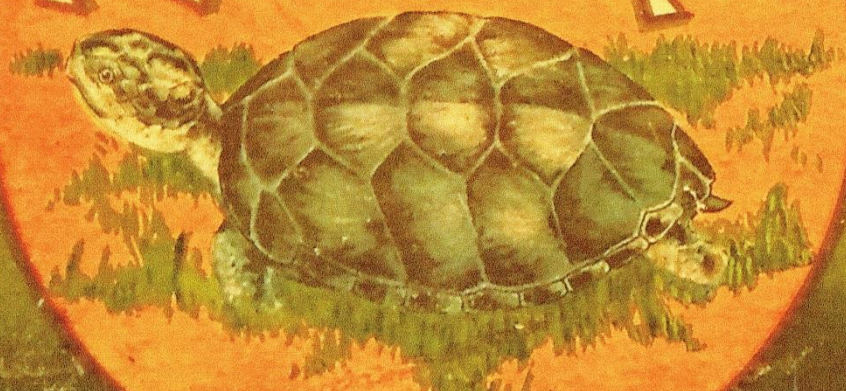
Robstown in 1957



PHOTO BY MCGREGOR, CORPUS CHRISTI, TEXAS

PRODUCE OF U.S.A.

TURTLE



BRAND

Tomatoes

PACKED & SHIPPED BY
JAMES B. McARDLE & CO.

1915



BROADCASTING

Tomatoes

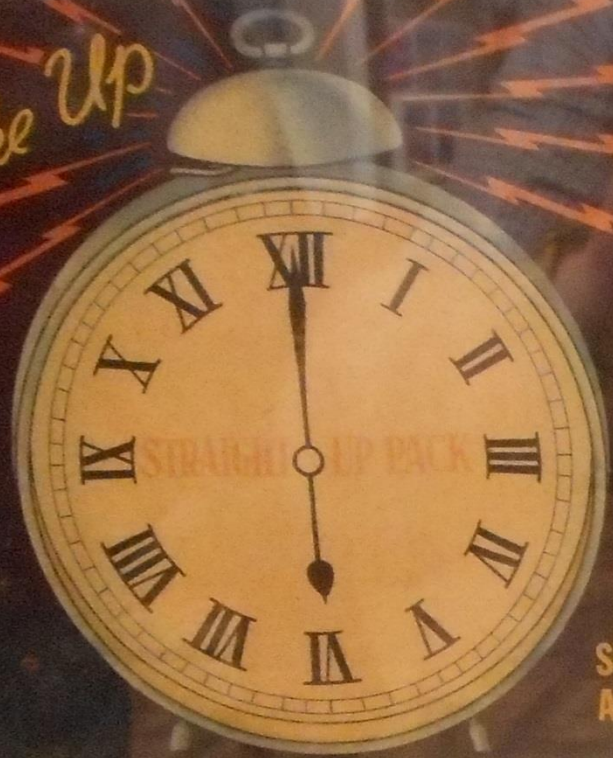
GROWN & SHIPPED BY
JAMES PACKING CO.
ROBSTOWN, TEXAS

NET WEIGHT
28 LBS.

PRODUCE OF U.S.A.



Wake Up



ALARM

BRAND

Texas
TOMATOES

**SOUTHWEST GROWERS
AND DISTRIBUTORS, Inc.
ROBSTOWN, TEXAS**

**PRODUCE OF U.S.A.
NET WEIGHT 28 LBS.**

**"BILL" RICHARDSON
SALES MANAGER**

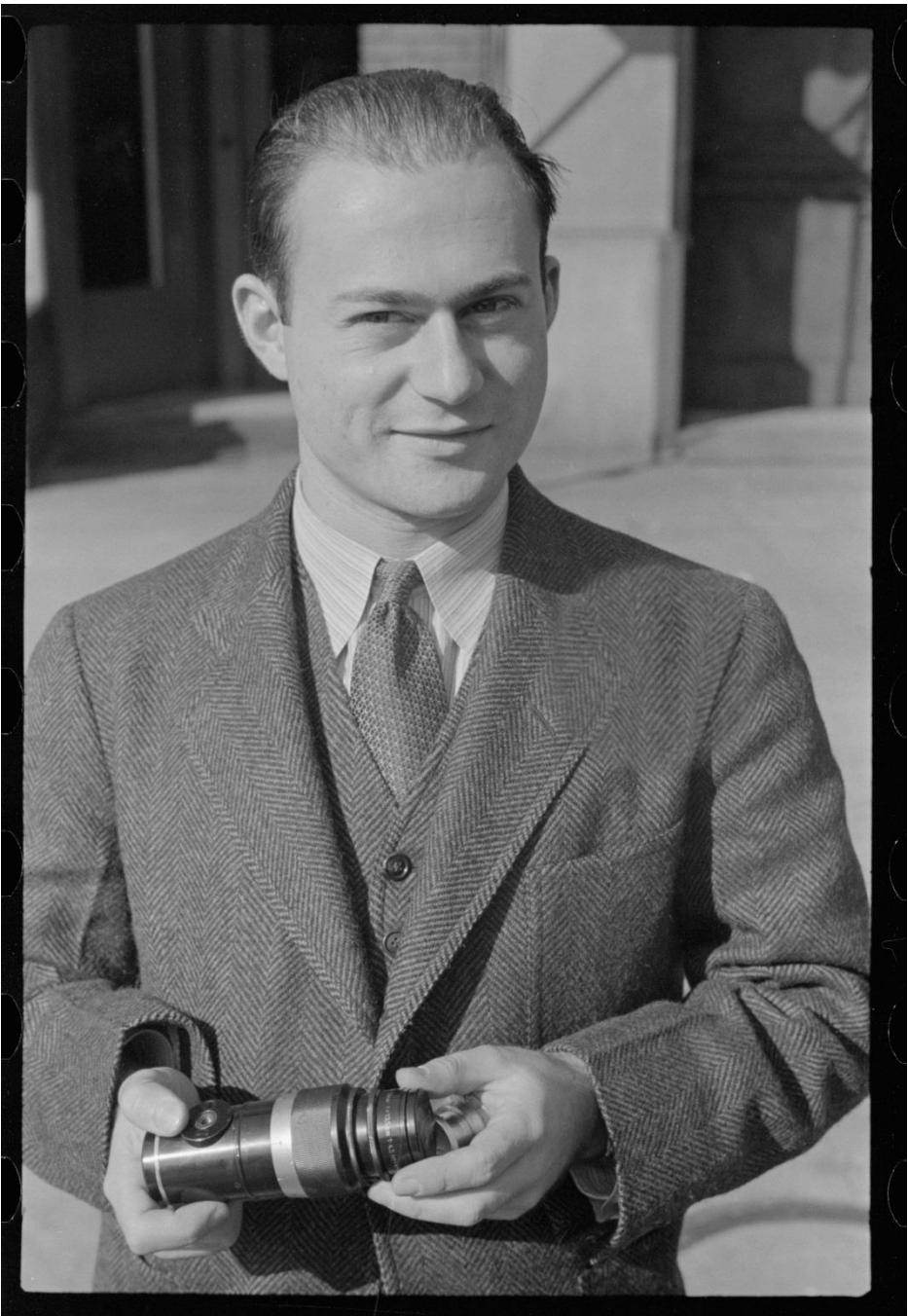




25310 D

24992-1





24940-D



24941-D

AXLEY-1-8 FT.



KODAK

24924-2





24966-2

24988-2

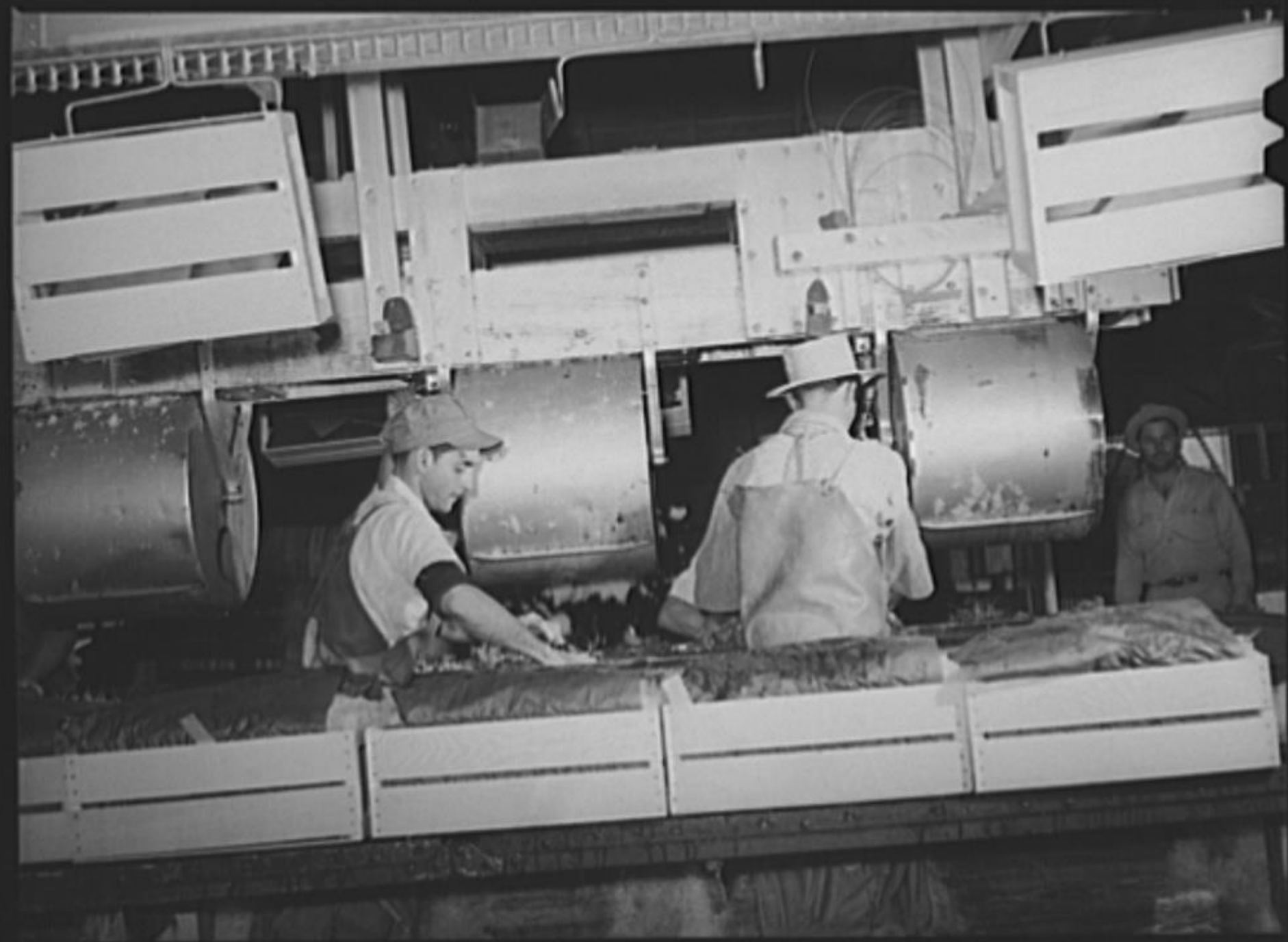


24992-1





24991-D



F-88642



24990-J

24971-D





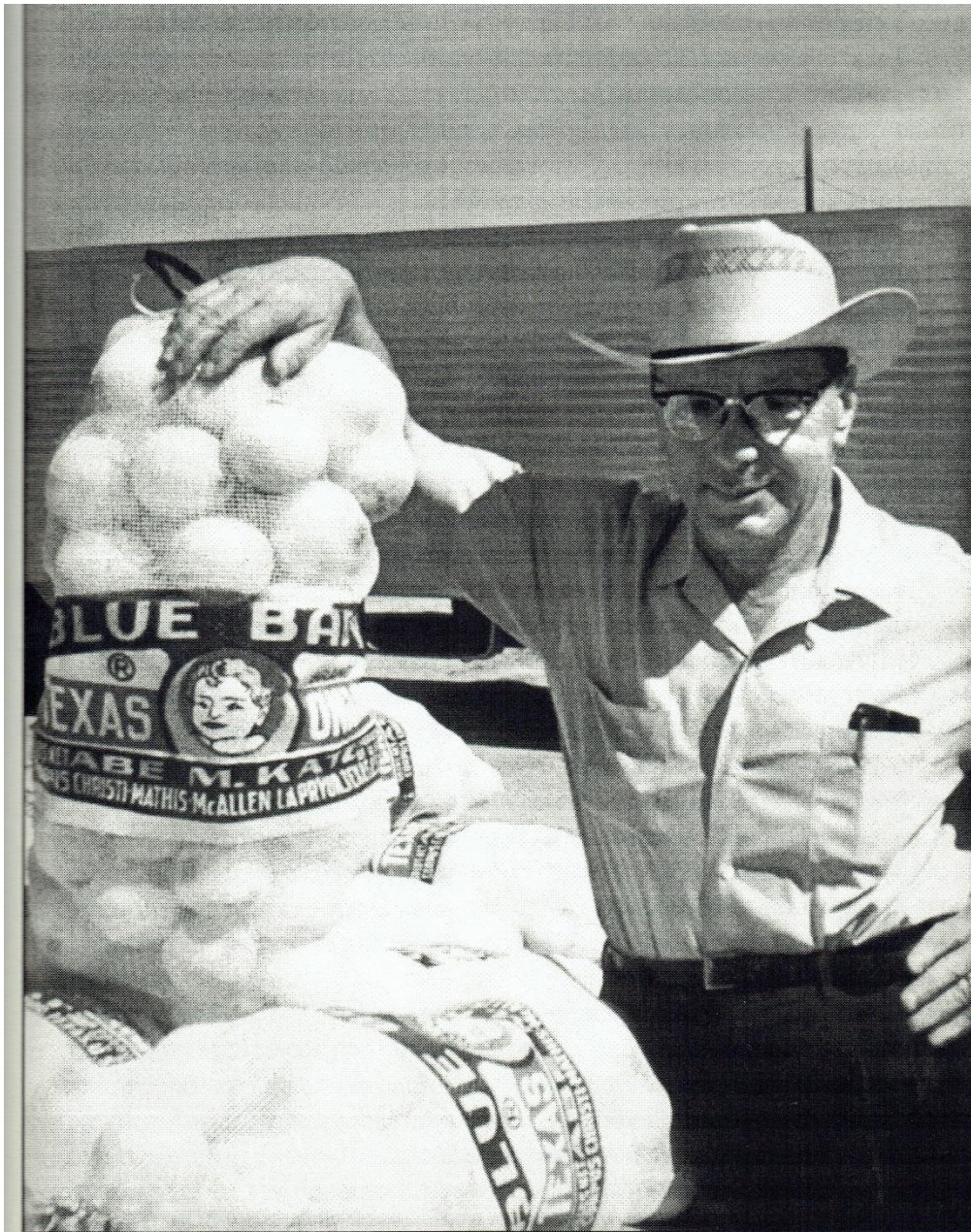
24993-J



PHOTO BY MCGREGOR, CORPUS CHRISTI, TEXAS



Robstown in 1957



Abe Katz.

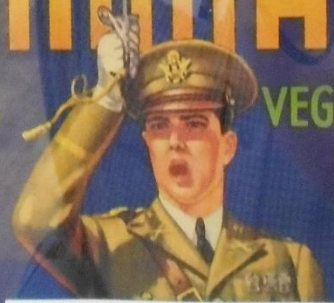


BLUE BABY
BRAND
TEXAS VEGETABLES



PACKED AND SHIPPED BY
ABE M. KATZ CO.
ROBSTOWN, TEXAS, U.S.A.

COMMAND
BRAND
TEXAS VEGETABLES



Command & Blue Baby Labels
Of
Texas Vegetables
Abe M. Katz Company

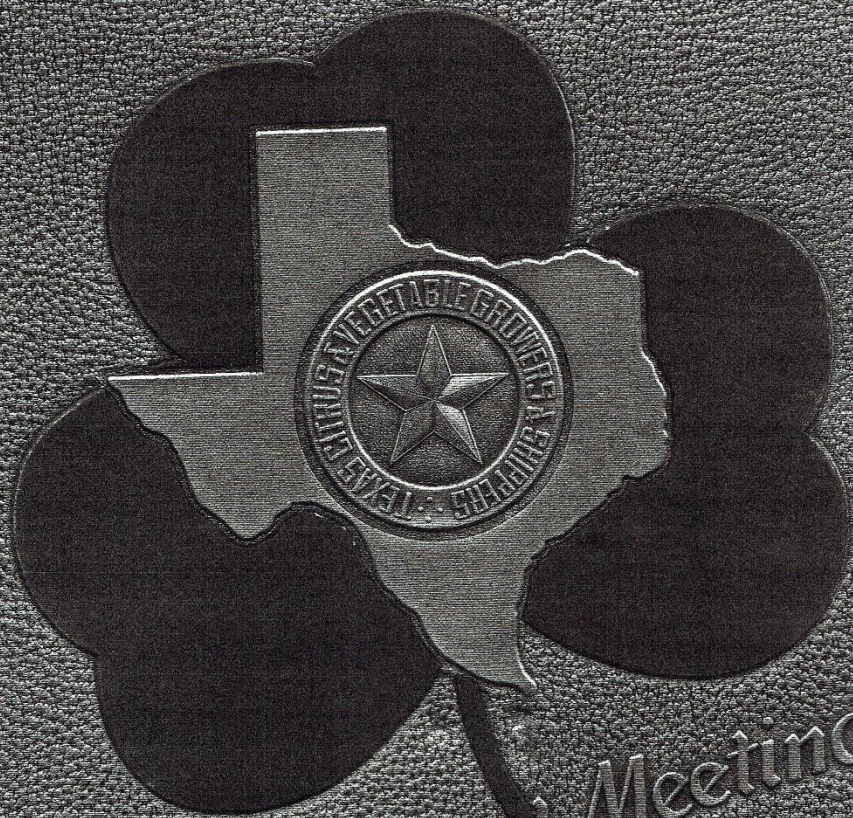
PACKED AND SHIPPED BY

MAIN OFFICE
ROBSTOWN, TEXAS



Mc-REDDON STUDIO
CORPUS CHRISTI, TEX.

CONGRUUM
CORPUS CHRISTI



Seventh Annual Meeting

The Shamrock

Houston, Texas

September 12-13-14-15, 1949

James G. McCarrick Company, Inc.

Doing Business as Usual

WITH

The Famous

TURTLE Brand



OFFICERS

Lionel S. White, Pres.

W. B. Speer, Vice Pres.

Robert F. Wolter, Sec.-Treas.



MAIN OFFICE: ROBSTOWN, TEXAS PHONES: LOCAL 27, L. D. 17

VALLEY OFFICE: MERCEDES — DEWEY ACKER, MGR.



BEST IN THE LONG RUN

JAMES G. McCARRICK COMPANY

Fruits and Vegetables

CODE : SPEED

LOCAL PHONE 27
LONG DISTANCE 17

ROBSTOWN, TEXAS

October 14, 1940.

Clayton Weather Service,
Canton, Mass.

Gentlemen:-

We are very anxious to get what information we can for this State south of San Antonio, Texas, particularly Laredo, Corpus Christi and Brownsville areas, as to frost danger periods and amount of precipitation for the balance of October, November and December.

If you can enlighten us along this line naming the probable cold periods we would appreciate a prompt reply.

Please be sure to send us the next seasonal report you issue, and advise by return mail when it is to be issued.

Yours very truly,

JAMES G. MCCARRICK COMPANY

Lionel D. White

Lsw

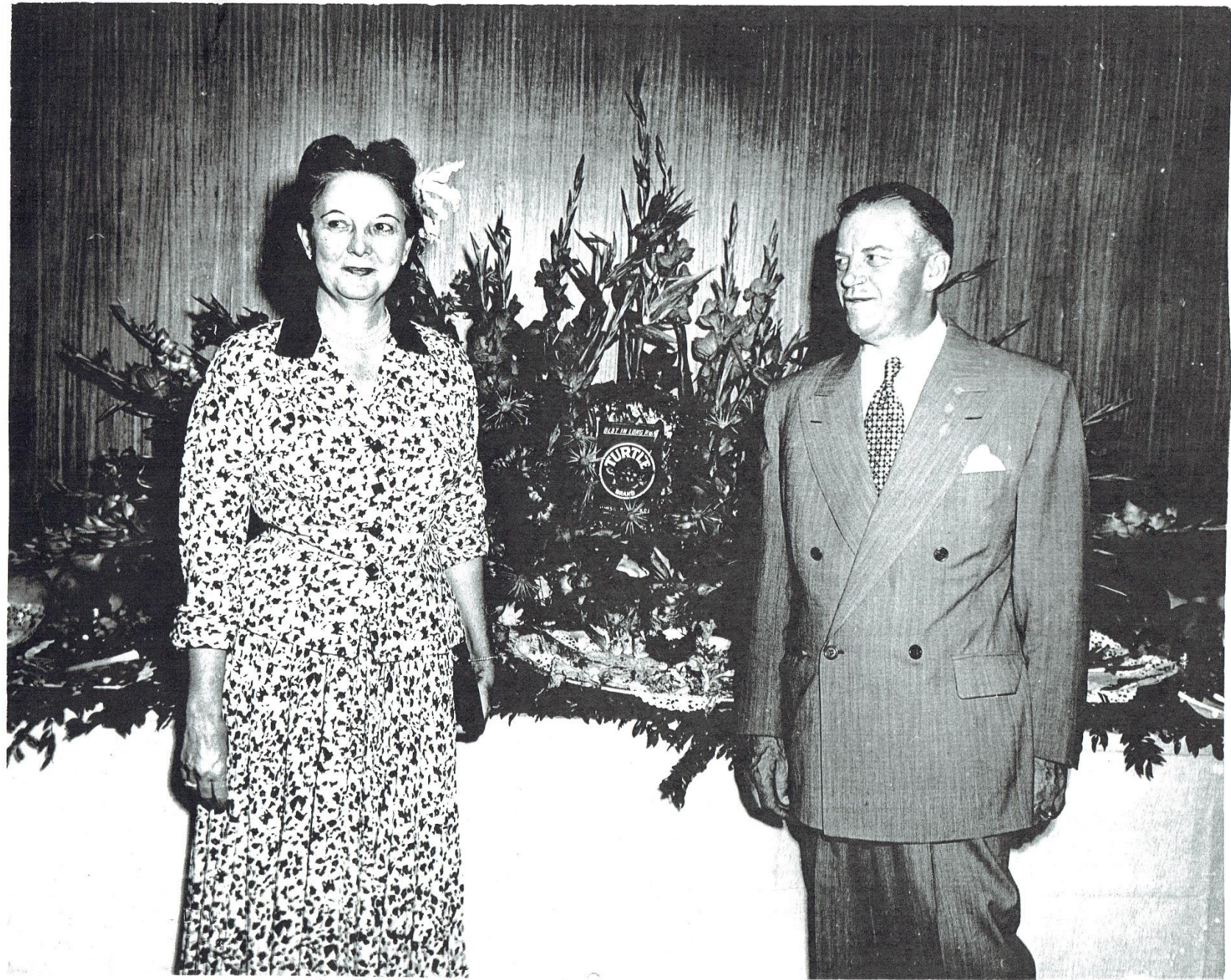
*As well as can be determined at present
cold periods are due Oct 23-24, 28-29, Nov 16-18, 27-28
Dec 1-2, 6-8, 12-15 and 23-24
Frosts do not generally occur in that district
until December but this year may occur
during the last week of late November*



LICENSE NO. 2685



PHOTO BY MCGREGOR, CORPUS CHRISTI, TEXAS









QUESTIONS??