

NUECES COUNTY HISTORICAL SOCIETY MEETING

April 7, 1981

7:30 p.m.

Japanese Art Museum

William Rogers, "pioneer Corpus Christian," is to be remembered by his descendants who are gathering here to share with us early experiences of our community.

Bill Walraven will contribute to the program and Ray Garcia will serve as program coordinator. Slides of our trip to San Patricio will also be shown.

HISTORICAL TOUR -- REFUGIO/GOLIAD

Nueces County Historical Society in conjunction with Refugio County Historical Society will sponsor a bus tour to sites in Refugio and Goliad, Texas, on Saturday, April, 11, 1981.

Buses will depart from the 1914 Courthouse promptly at 8 a.m. with the first stop at Our Lady of Refuge Church in Refugio where docents will serve as commentators at four sites in the area. The buses will proceed to Goliad State Park for a picnic lunch, a tour of Goliad, Mission Espiritu Santo, Presidio La Bahia, and return to Corpus Christi by 5 p.m. Members of the local Historical Society will serve as commentators on the buses and point out places of interest en route.

Participants are requested to bring sack lunches for the picnic at the State Park and a stop will be made for the purchases of cold drinks. The fee for the event to be collected when boarding the bus, in the amount of \$15.00 will cover the transportation, docent fees at Refugio, entrance fee at La Bahia, and incidentals. It is requested that reservations be made before April 8th by telephoning:

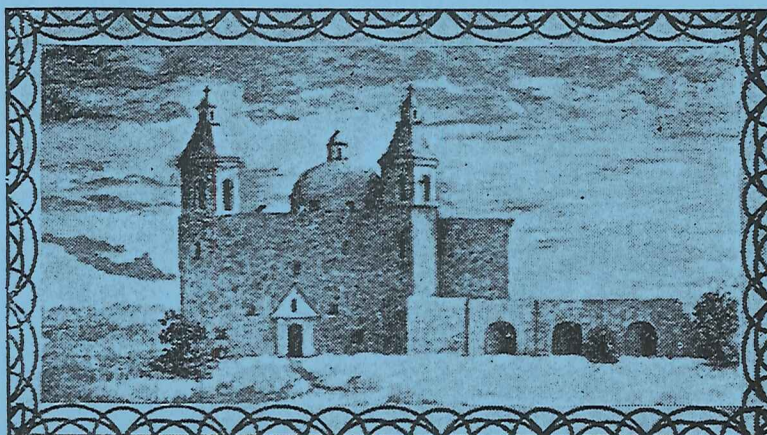
992-5618 or 241-4605.

The wild flowers are in bloom adding to your enjoyment of the historical heritage of the area. This tour is being planned upon special request of the participants in the San Patricio Area Tour of Last Fall.

Wear comfortable shoes, be on time and plan to enjoy a delightful journey into our historical past.

INSTALLATION DINNER

In order not to conflict with Cinco de Mayo festivities, our installation dinner will be held Thursday, May 7, at the New Nueces County Courthouse in the sculpture garden area.



REPUTED PICTURE OF OUR LADY OF REFUGE MISSION—1795

Nueces County Historical Society
Old Nueces County Courthouse
1123 N. Mesquite
Corpus Christi, TX 78401