

Nueces County Historical Society
 Nueces County Courthouse of 1914
 1123 North Mesquite
 Corpus Christi, Texas 78401

Thursday, November 1 - 30 - Nueces County Historical Society photograph collection Nueces County Commissioners Courtroom, 901 Leopard (third floor), Nueces County Courthouse "Corpus Christi, The History of a Texas Seaport", by Bill Walraven. 8:00 a.m. - Noon and 1:00 p.m. - 5:00 p.m. Monday thru Friday.

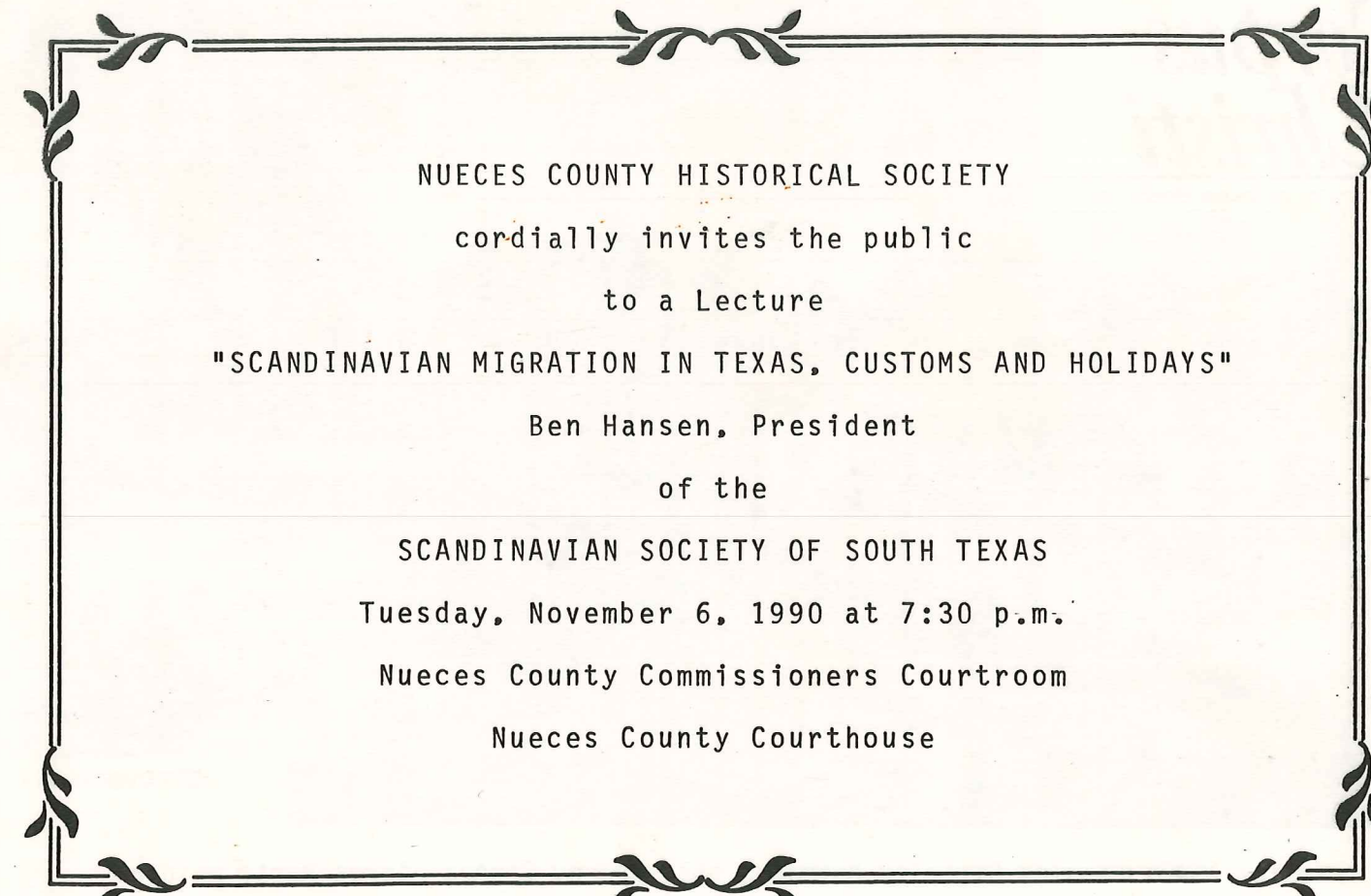
Friday, November 2 - 30 - CCNB Centennial Exhibition at 500 North Shoreline. 9:00 a.m. to 6:00 p.m. Monday thru Friday.

Tuesday, November 6. - "Scandinavian Migration In Texas, Customs and Holidays" by Bill Hansen in the Nueces County Commissioners Courtroom, 3rd Floor, Nueces County Courthouse at 7:30 p.m.

Saturday, November 10 & 17 - Work party at Old Courthouse. Bring brooms, dust rags, yard equipment and lawn chairs. 8:30 a.m. to Noon.

Friday, November 16 - "Doc McGregor comes to Corpus Christi: Photographs from 1937 to 1942." Art Museum of South Texas and co-sponsored by Nueces County Historical Commission and Corpus Christi Museum of Science and History. Tuesday thru Saturday, 10:00 a.m. to 5:00 p.m. & Sunday, 1:00 p.m. to 5:00 p.m. 1902 North Shoreline.

Tuesday, November 20 - Oral History Committee Judge Mike Westergren's Jury Room. 5:00 p.m. to 6:00 p.m.



NUECES COUNTY HISTORICAL SOCIETY

cordially invites the public

to a Lecture

"SCANDINAVIAN MIGRATION IN TEXAS, CUSTOMS AND HOLIDAYS"

Ben Hansen, President

of the

SCANDINAVIAN SOCIETY OF SOUTH TEXAS

Tuesday, November 6, 1990 at 7:30 p.m.

Nueces County Commissioners Courtroom

Nueces County Courthouse

BEN HANSEN

Ben Hansen, active at the Local Seaman's Center, comes from a Norwegian and Danish family. He was born on Staten Island, New York, reared on the Danish island of Bornholm and returned to the United States in 1946. Trained as a carpenter in Denmark, he also is an X-ray technician and has lived in Florida and Louisiana.

A lay minister in the Missouri Synod Lutheran Church, he is the Lutheran Chaplain at the Port of Corpus Christi. He lives on the family farm at Odem.

MEMBERSHIP DUES

The Nueces County Historical Society, a non-profit tax-exempt organization, was formed November 8, 1952, in Judge Noah Kennedy's office in the 1914 Nueces County Courthouse. It is the longest tenured historical group in Nueces County.

Its membership and all meetings are open to the public. Dues are \$7.50 a person, \$10.00 family and \$2.00 students. PLEASE JOIN US!

DUES ARE NOW PAYABLE. A red star on your mailing label indicates that your dues are paid for 1990 - 1991. Those who have not paid are requested to submit your check to Nueces County Historical Society, c/o Kay White, 1217 McBride Lane, 78405.

Corpus Christi

The History of a Texas Seaport



Bill Walraven

In the 1940s Charles Berkeley Normann, assisted by Geneva Flores Hart, painted this rendition of the Corpus Christi waterfront. The painting emphasizes Captain John Anderson's wind-powered mill, which was used to grind salt and corn, as well as to furnish power to cut wood. Anderson, a Swedish-born seafarer, brought his family to Texas in 1852.

ALL PROCEEDS BENEFIT PRESERVATION OF THE 1914 NUECES COUNTY COURTHOUSE

CORPUS CHRISTI, THE HISTORY OF A TEXAS SEAPORT

BY Bill Walraven.

Co-sponsored by the Corpus Christi Chamber of Commerce and the Nueces County Historical Society. Illustrations by Nueces County Historical Society and Partners in Progress by Grady Phelps. Society members \$18.50. All others \$22.95

TEXAS TRUTHS. The 1914 Nueces County Courthouse Architect Harvey Page published a book, detailing the beauties of the Greek Neo-classical National Register building. A limited number of reprints of this book is available. \$5.

COMMEMORATIVE PLATES of the 1914 Nueces County Courthouse. Limited edition. \$15.

COMMEMORATIVE DRAWINGS of the 1914 Nueces County Courthouse. \$2.

Peggy Bickham 241-4605
Thomas Murphy 888-0556
Margaret Walberg 991-4221
Margaret Ramage 882-1344

Work Continues on Coppini Monument

In conjunction with the Bluff Balustrade restoration, Corpus Christi's first piece of public art, by world renown sculptor Pompeo Coppini is being restored. Artist and Del Mar College Professor Ron Sullivan is restoring the "Queen of the Sea" bas-relief sculpture. Sullivan normally works a few hours each afternoon on the restoration. Short periods of work are necessary in order to allow the materials to dry between sessions.

A plywood structure encloses the monument. The painting on the structure depicts the monument's theme of Mother Earth, King Neptune and the maiden Corpus Christi. It also includes the Rotary Club Wheel recognizing the club's contribution to the restoration of the sculpture. Debbie Wingfield Smith created the design for the structure. Art student Alberto Rodriguez applied the design to the structure. He and fellow student, Robby Robertson painted the design. Briner Paint Manufacturing Co., Inc. generously donated the paint for this project. Rodriguez was a student of Sullivan's in 1986 and now attends San Antonio Art Institute. The structure will remain until the sculpture restoration is completed in approximately sixty days.

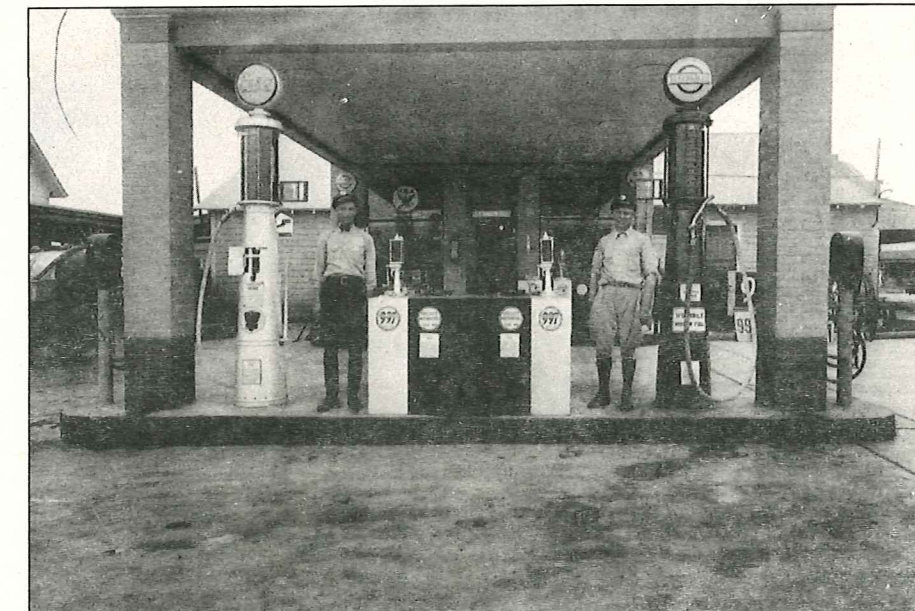
One of the original light fixtures on the Balustrade is on display in the Heart office window. Architect John Wright has worked closely with the City and the Heart to reproduce the fixtures which will be installed in December. The Balustrade will glow once again! Special thanks to John Wright, Govind and Associates, Nueces County Historical Commission, Historical Society, CC Rotary Club, Friends of the Courthouse and the City of Corpus Christi for their work on the Balustrade restoration.

October was a busy and successful month in which SAGA participated in many local events. SAGA had a booth in the BAYFEST celebration and many coats of arms and books were sold to raise funds for the club. Dr. Dalia Garcia who has done extensive research on Columbus, was the main speaker at the Nueces County Historical Society. On October 10th, Dr. Leo Carrillo invited me to lecture at the University, a class in advanced genealogy concerning our roots and NUEVO SANTANDER. On Friday, October 12, 1990 SAGA participated in the PRESS CONFERENCE at Dock One, Pavilion in the unveiling of the statuette of Columbus. Over 600 persons attended. Thanks to Mrs. Sandra Cantu who was able to bring over 200 students to the unveiling of the statuette.

Clotilde P. Garcia, M.D.
Clotilde P. Garcia, M.D.

"Itinerant Photographer", exhibit lent by Friends of the Courthouse, Inc. and the Nueces County Historical Society.

ART EXHIBITIONS



Humble Oil Service Station, Corpus Christi, 1934, from the "Itinerant Photographer" collection. The exhibition will be at the Multicultural Center, October 1-31.

MULTICULTURAL CENTER'S EXHIBIT IS A GLIMPSE OF CORPUS CHRISTI, 1934

"In February of 1934, an itinerant photographer made nearly 500 pictures . . . in Corpus Christi, Texas. With his 5x7 glass-plate camera and flashpowder equipment, he canvassed the

business districts, making wide-angle views of these people . . ." begins Sybil Miller's book *Itinerant Photographer, Corpus Christi 1934*.

The itinerant abandoned his negatives. They changed hands several times, ultimately to the care of the late "Doc" McGregor, who, himself, recorded a half-century of south Texas life on 500,000 frames now at Corpus Christi Museum. McGregor donated the itinerant's archive in 1976 to UT/Austin, where it later came to Miller's attention.

Ms. Miller, who teaches photography at St. Edwards University, describes the photographs as "unusual because they exist as a group . . . from a single time and place . . . (and the) photographer made exceptionally good use of his camera . . ." The collection has been featured in several publications including *American Heritage* and *Texas Monthly*, and has been exhibited at the LBJ Library as well as in Dallas, Fort Worth, and Houston.

About 50 prints comprise the "Itinerant Photographer" exhibition at the Multicultural Center. Each depicts an apparently thriving local business. The photographer certainly was focused on prosperity because clients must have cash to buy prints, and the only indication that the city even noticed the depression is the NRA sign on many walls.

The photographs evoke a strong feeling of nostalgia for "the good old days" when a Coke was a nickel, a hamburger, a dime, and every drug store sported a soda fountain. Ms. Miller's book of photographs is a delightful trip into a time warp, and the exhibition is certain to be the same.

"Itinerant Photographer" will hang at the Multicultural Center, October 1-31. The center, in the Galvan House at Heritage Park, welcomes visitors Monday-Friday, 10-4 p.m. and Saturday, 10-2 o'clock. Free admission.

ITINERANT PHOTOGRAPHER: Corpus Christi, 1934 by Sybil Miller will be for sale, \$24.95, at the Multicultural Center during October.

October 1990 VOL. 18, No. 10

VISITORS GUIDE

Miller Publications
P.O. Box 30974 Corpus Christi, TX 78463
Advertising & Information (512) 888-8704