

NUECES COUNTY HISTORICAL SOCIETY

OFFICERS

Dr. Thomas Kreneck
 President

Anita Eisenhauer
 First Vice President

Charles H. Davis
 Second Vice President

Margaret Walberg
 Third Vice President

Doyle Willis
 Recording Secretary

Ray J. Garcia
 Corresponding Secretary

Peggy Bickham
 Treasurer

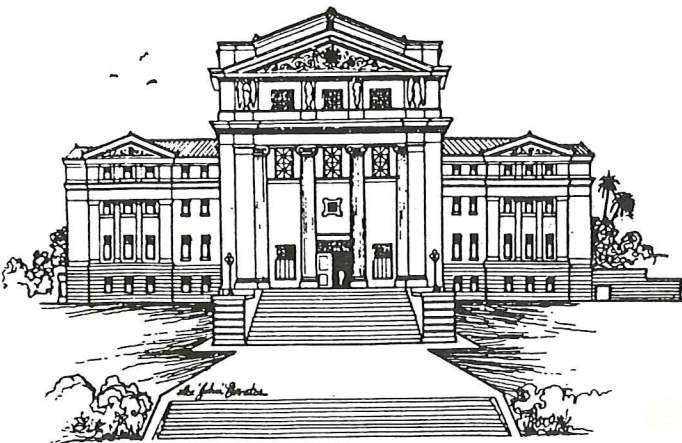
DIRECTORS

Dr. Clotilde Garcia
 Dr. Dalia Garcia
 Bobby Haegelin
 Margaret Ramage

Barbara Stever
 Harriet Tillman
 Arturo Vasquez
 Bill Walraven

Nueces County Historical Society
 1914 Nueces County Courthouse
 P.O. Box 60003
 Corpus Christi, Texas 78466-0003

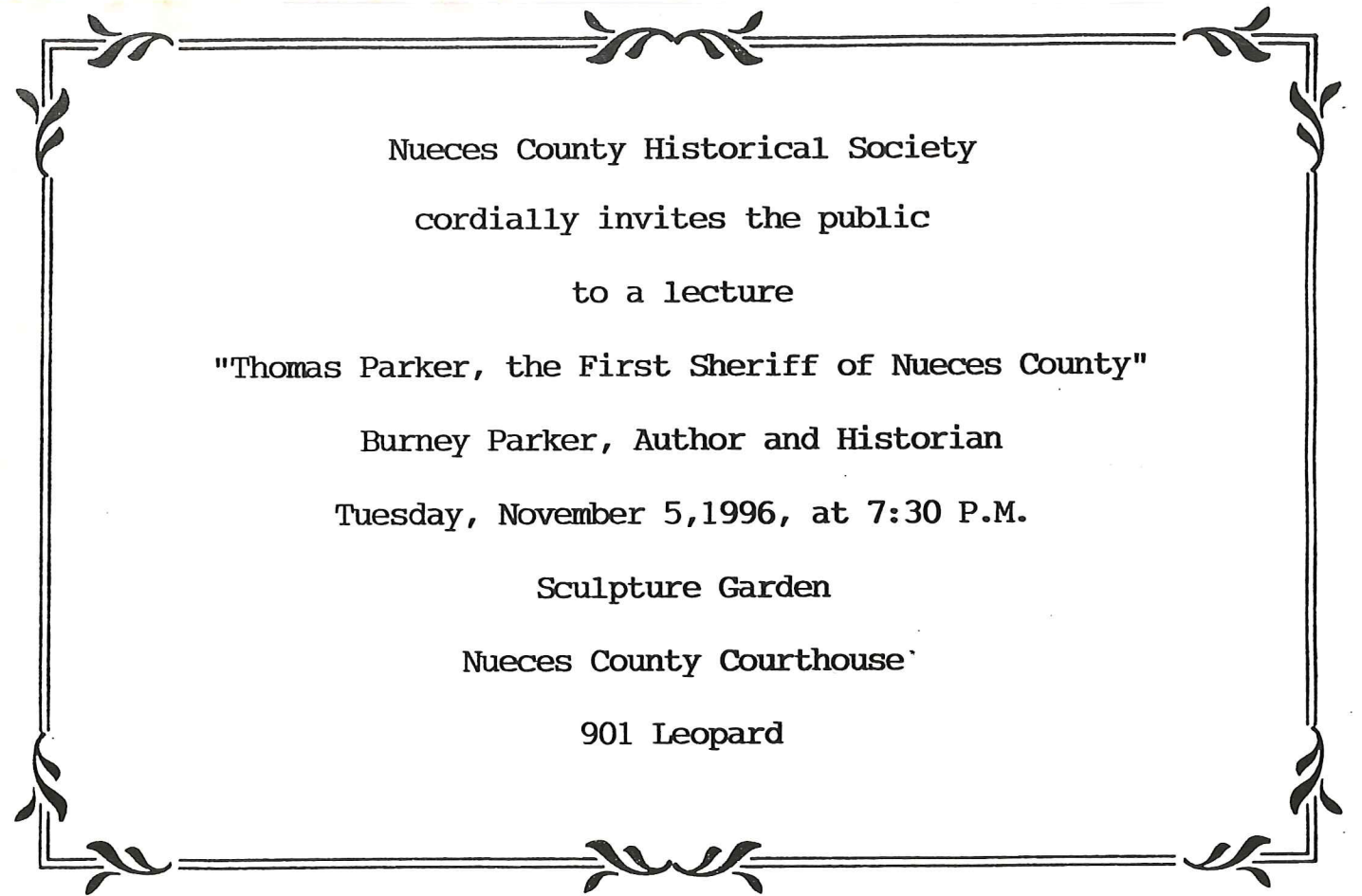
NON-PROFIT ORG.
 U.S. POSTAGE
PAID
 CORPUS CHRISTI, TX
 PERMIT NO. 397



1914 NUECES COUNTY COURTHOUSE

A STAR ON YOUR MAILING LABEL INDICATES
 THAT YOUR 1996-1997 DUES HAVE BEEN PAID.

IF YOU HAVE NOT PAID YOUR DUES, PLEASE
 REMIT YOUR CHECK USING THE ENCLOSED
 MEMBERSHIP FORM.



Nueces County Historical Society

cordially invites the public

to a lecture

"Thomas Parker, the First Sheriff of Nueces County"

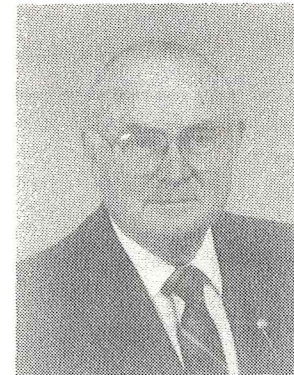
Burney Parker, Author and Historian

Tuesday, November 5, 1996, at 7:30 P.M.

Sculpture Garden

Nueces County Courthouse

901 Leopard



Biographical Sketch Burney Parker

Burney Parker was born in Houston in 1928 and grew up during the great depression. He went through grade school in Houston and then on to Schreiner Institute and Texas A & I. for his college years. He took up a career in banking and received his graduate certificate from Southwestern Graduate School of Banking at Southern Methodist University. After 46 years in the banking field, he took early retirement in 1990 and got more involved in History and Genealogy. Burney is a sixth generation Texan having ancestors on both his fathers and his mothers side who were citizens of the Republic. His mother descends from several families who were among the first settlers of Washington County, which is now his home. The Parkers first settled in Galveston in 1837, before the townsite was laid out, They later joined Henry Kinney at his Rancho in Nueces County, which later became Corpus Christi. There they remained for four generations. Burney moved with his family back to Nueces County in 1946, and married Frances Wuensche in the small town of Bishop. The Wuensches brought modern farming to South Texas.

Burney and Frances were the parents of three children and have lived in a number of places throughout Texas. Burney has been active in historical commissions in Fayette, Freestone, Chambers, Wharton and Washington. Counties . as well as the Sons of the Republic of Texas. He reorganized both the Wharton and Washington county chapters. SRT. He was chairman of the Wharton County Historical Commission in 1990/91 and worked with a committee that produced a Pictorial for Wharton County; and gathered information for the new Handbook of Texas. Several new historical markers were dedicated during his term. . He was a member of the foundation board of Wharton County Junior College and taught genealogy courses through the Continuing Education Program in El Campo, Victoria, Columbus and Brenham. He has compiled articles for the Coastal Bend Genealogy Society, The Old Mecklenburg Genealogy Society and Bridges and Trails. He has appeared on "The Eyes of Texas" twice and completed several books involving Family Histories, which include The Wuensche Dube Family History The Little Drummer Boy, The Pennington Lineage and several publications on the Polk Family. (The Polks were also early residents of Nueces County operating the Virginia House Hotel on Water Street, before and after the War Between the States.).

HOSPITALITY

A special thank you for serving refreshments in October to ANITA EISENHAUER, and to BARBARA and JIM STEVER, CHARLES DAVIS, and ERSEL MATTHEWS for November.

CONDOLENCES

Condolences to the families of MARGUERITE MEW LOWMAN, ROSA LOZANO GARZA and C.B. WEIL. These three devoted former members of the Nueces County Historical Society as members of pioneer families contributed much to the preservation of our local history. The Historical Society extends appreciation for memorials in memory of C.B. WEIL to the following: DOLORES BROWN, MORJORIE GILES, and MR. & MRS. RICHARD LESHIN.

In Appreciation;

SUSTAINING PATRONS

LILLIAN EMBREE

ANITA EISENHAUER

PATRON

CAROL KILGORE

A STAR ON YOUR MAILING LABEL INDICATES THAT YOUR 1996-1997 DUES HAVE BEEN PAID.

IF YOU HAVE NOT PAID YOUR DUES, PLEASE REMIT YOUR CHECK USING THE ENCLOSED MEMBERSHIP FORM.

NUECES COUNTY HISTORICAL SOCIETY

YOUR INVITATION FOR MEMBERSHIP PRESERVE OUR LOCAL HISTORY

- * Nine public local history lectures annually
- * Bus tours and brochures of historic sites, photograph preservation, and oral history
- * Publisher of *The History of Nueces County* (1972), Co-sponsor of *Corpus Christi: The History of a Texas Seaport* (1981) by Bill Walraven, Co-sponsor of *Texas Truth* (reprint of 1915 booklet by Harvey Page)
- * Financial assistance:
 - Preservation of the 1914 Nueces County Courthouse
 - Broadway Bluff Improvement
 - Nuecestown Schoolhouse
 - 1554 Shipwreck Treasures at the Corpus Christi Museum
 - Historic documents at the Corpus Christi Museum
 - Historic documents at the Corpus Christi Public Library
 - Historic documents at the Texas A&M University Corpus Christi Library
 - Art Center of Corpus Christi
 - Texas State Aquarium
 - Blas Maria de la Garza Falcon sculpture
 - Hector P. Garcia Plaza at the Texas A&M University Corpus Christi
- * Co-sponsor, *Corpus Christi Chronicles*
- * Co-sponsor, Columbus Day Workshop
- * Co-sponsor, Henry Lawrence Kinney sculpture at the Nueces County Courthouse

Please clip application and mail it today along with your check. Thank you.

1996-1997 MEMBERSHIP DUES ARE NOW PAYABLE

NAME _____
Last First

ADDRESS _____
Street Apt.

CITY _____ STATE _____ ZIP _____

PHONE _____
Home Office

CHECK CATEGORY:

- _____ Individual - \$7.50
- _____ Family - \$10.00
- _____ Student - \$2.00
- _____ Sustaining Patron - \$25.00
- _____ Patron - \$50.00
- _____ Supporting Patron - \$100.00
- _____ Corporate - \$250.00
- _____ Angel - \$1,000.00
- _____ Other - \$ _____

Please remit check to:

Nueces County Historical Society
Attention: Charles Davis
P.O. Box 60003
Corpus Christi, Texas 78466-0003

The Nueces County Historical Society, organized November 8, 1952, is a 501(c)3 nonprofit tax-exempt organization. It is the longest tenured public historical group in Nueces County. For more information: 512-241-4605.